

# EVOKE SNACK 6

Experience Vending Convenience



Best-In-Class Product Lighting



Product Flexibility



Fully ADA Compliant



iVend® Guaranteed Product Delivery



Improved Servability



New Stronger Leg Design



Maximized Visual Merchandising



Industry Leading Style and Design

Custom Back Lighted Logo Panel Option

Custom Branding Option

Standard Changeable Accent Lighting



Full Featured Customer Interface

Ergonomically Recessed

Expandable Control System

Engaging 10" Touch Screen Option

Shopping Cart Option



Payment Device Flexibility



Large Friendly Delivery and Change Bins



1-800-247-8709 • www.uselectit.com



# EVOKE SNACK 6

## 100 % Brighter LED Lighting

Double the showcase lighting. Enhances product presentation promoting more sales. Long life, energy efficient and eco-friendly.

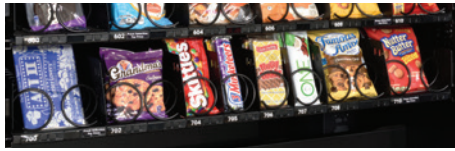


## Product Capacity and Flexibility

Up to seven steel trays and configurable to almost any package size for greater merchandising flexibility.  
 Full selection (5.4" W)  
 3/4 selection (4.0" W)  
 Candy selection (2.7" W)



## Full-size 7th Tray Option



## iVend® Guaranteed Delivery System

Enhanced iVend sensor system keeps customers satisfied and reduces service calls for misloaded product.



## ADA Compliant

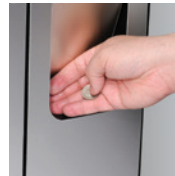
Ergonomic controls, payment systems and delivery conform to ADA guidelines.



Shown with 6 tray configuration, 10" touch screen and logo panel.

## Large Friendly Product Delivery and Change Bins

Large size bin access and accommodation for larger and multiple products. Friendly coin return with complete visibility of change.



## LED Back Lighted Logo Panel Option

Put your customer's name in lights.



## Color Choice for User Interface Accent Lighting

Complement your location or branding décor with programmable coin insert and user interface area down lighting.



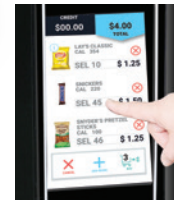
## Ergonomic 10 Degree Recessed User Interface

Large back lighted and Braille identified keys are complemented by a large full color credit and information screen.

## iCART

### Optional 10" Touch Screen Interface

10 inch full-color capacitive touch screen provides customers with a shopping native cart purchase experience including product calorie information.



## Expandable Control System

Allows for unmatched third party customizing

- Application development
- Interactive media and advertising
- Larger displays
- Wi-Fi and Bluetooth®
- Cellular Modem



## Payment System Versatility

Two payment openings for traditional cash, coin, debit & credit with integrated support for your preferred third party devices including :

- EMV Chip Support
- NFC (Mobile Wallets)
- Encrypted Mag Stripe
- More...



## Improved Serviceability

Easy access to systems for restocking, currency collection, pricing and standard maintenance.

- 90 degree lock with 4 point latch system
- Separate product and control system areas
- Intuitive service menu system



EVOKE Snack 6						
Selections	Up to 71 items (6 Tray); 83 Items (7 Tray)					
Electrical Requirements	Domestic: 115 VAC/60Hz, 1.2 AMPS International: 230 VAC/50Hz, 0.6 AMPS					
Dimensions	Height	72" (183 cm)	Width	46" (116.8 cm)	Depth	35.2" (89.4 cm)
Ship Weight	*626 lbs. (283.9 kg) *Varies with tray configuration and options.					

In order to bring you the best products possible, we continue to improve product design and performance and as such specifications are subject to change without notice. The manufacturer makes no warranties or representations of compliance with any local, state, national or international requirements for the operation of the equipment in any application for which it is capable of being used beyond approvals listed on the product. Any purchaser is required to make an independent analysis of the fitness and legality of the product's usage before it is deployed and must continue to monitor the potential changing nature of compliance requirements. The manufacturer expressly disclaims responsibility for compliance with any laws and affirmatively requires any buyer to make an independent analysis of the fitness and legal basis of any use or application of the subject unit.



U-Select-It  
 8040 University Boulevard  
 Des Moines, Iowa 50325  
 1-800-247-8709  
 Fax: 515-274-0390  
 www.uselectit.com

